



Jackdaws
PORT ISAAC



Jackie Stanley
ESTATE AGENTS



- **Attractive Three Storey Grade II Listed Modern Cottage**
- **Located in the Heart of this Famed Cornish Fishing Village**
- **Two Bedrooms & Two Reception Rooms**
- **Fully Refurbished Stylish Accommodation**
- **Bespoke Oak Staircase & Vaulted & Beamed Ceiling**
- **Elevated Two-Tier Terrace with Views over the Village, Harbour & out to Sea**
- **Private Leased Parking Space**
- **Just One Minute from the Harbourside Cafés & Restaurants**

Welcome to Jackdaws, a beautiful, modernised and Grade II listed two bedroom cottage located just 200 meters from the harbourside of the quaint, sought after and historic picturesque fishing village of Port Isaac.

Since 2010, the current vendors have cleverly reconfigured and fully refurbished Jackdaws to create a modern three storey home with uniquely arranged accommodation in a bespoke and stylish design.

This comfortable and inviting cottage has the benefit of a leased parking space in the Quarry carpark on Church Hill, transferable to any new owner. Additionally, a two tiered

terraced garden sits elevated behind the property providing glorious views over the village rooftops below, to the harbour and straight out to sea.

Noteworthy features include attractive slate hanging to the external elevation, original vaulted and beamed ceiling, original exposed floorboards, bespoke oak staircase and a bespoke and fully equipped kitchen. The accommodation briefly comprises a front patio terrace with bin store/shed, ground floor sitting room with feature fireplace and window shutters, a comfortable double bedroom and single/bunk room on the first floor as well as a shower room and separate cloakroom/utility. The second floor is fully open plan and is home to the bespoke kitchen, a dining area and sitting area with views straight down to the harbour and out to sea. The ceiling here is vaulted and beamed and the aforementioned terraced garden is accessible via a stable door. Services to the property include mains water, electricity and drainage. EPC rating F. Council tax band C.

Port Isaac is a quaint, historic picturesque fishing village, well known globally for its association with Doc Martin and the Fisherman's Friends. This sought after destination offers breathtaking walks across the surrounding dramatic coastline of North Cornwall as well as having its own beach and working harbour. There are delightful boutiques and galleries for those who wish to explore the magical narrow streets and to finish off you can always pop into one of the cosy cafés, pubs or Michelin star restaurants of Nathan Outlaw. The neighbouring village of Port Gaverne was once a thriving 19th Century fishing port and to this day remains unspoilt with the sheltered sandy beach protected by the National Trust. Watersports equipment is available for hire so one can get out and experience water based activities.



**Jackdaws, 32 Church Hill,
Port Isaac, PL29 3RQ**
£560,000 guide

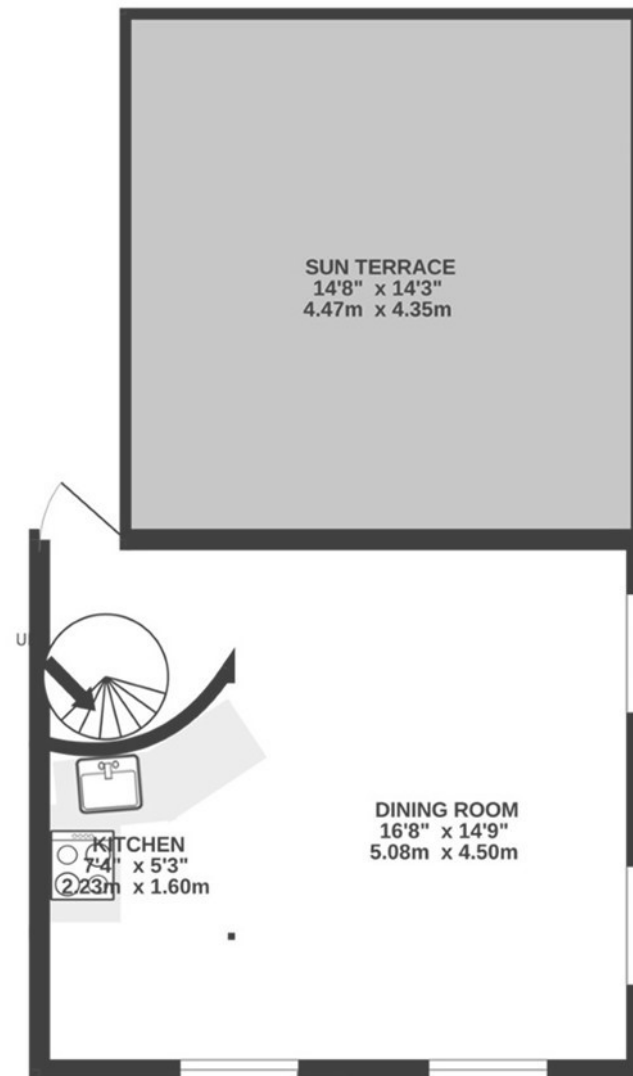
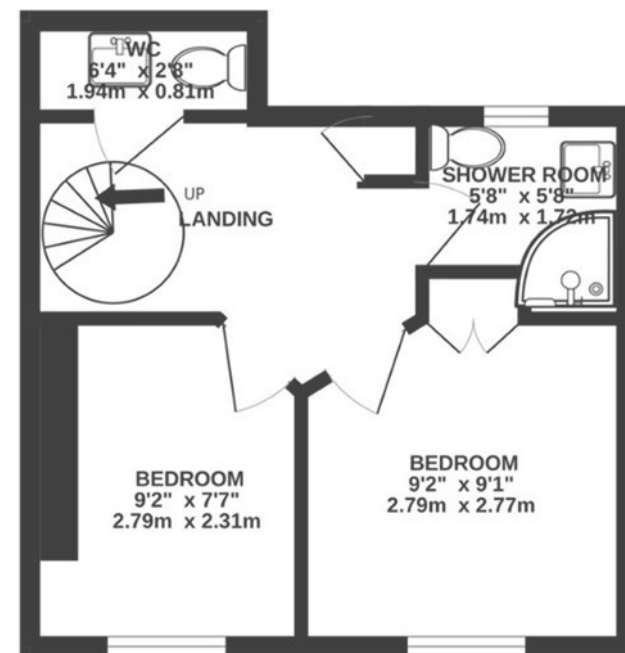
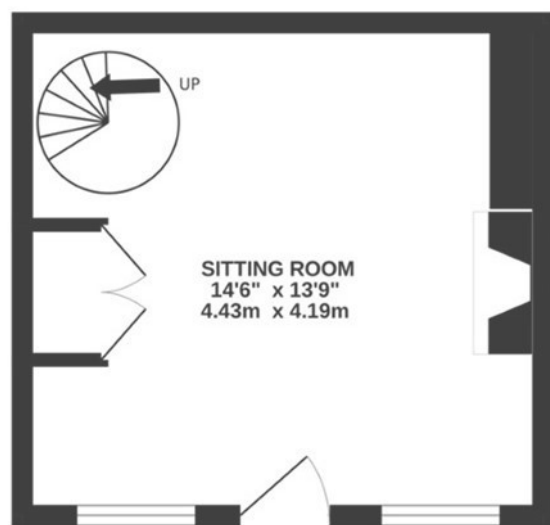
t: 01841 532555
 e: sales@jackie-stanley.co.uk
 1 North Quay
 Padstow
 Cornwall
 PL28 8AF



To find Jackdaws, turn off the B3314 coast road onto the B3267 signposted Port Isaac. Enter the village and head down Fore Street to the harbour. Pass the harbour and bear left up Church Hill. Jackdaws can be found halfway up the hill on the right hand side. The postcode for satellite navigation is PL29 3RQ. What3words: wharfs.biggest.storyline

“Beautiful, modernised and Grade II listed two bedroom cottage, just 200m from the harbourside”

TOTAL FLOOR AREA : 690 sq.ft. (64.1 sq.m.) approx.



GROUND FLOOR
187 sq.ft. (17.4 sq.m.) approx.

1ST FLOOR
256 sq.ft. (23.8 sq.m.) approx.

2ND FLOOR
246 sq.ft. (22.9 sq.m.) approx.

