

Henry's
PORT ISAAC



Jackie Stanley
ESTATE AGENTS



- **Grade II Listed Three Storey Cottage**
- **Chic & Uniquely Styled Accommodation**
- **Located in the Heart of this Famed Cornish Fishing Village**
- **Three Double Bedrooms**
- **Wood Floors, Exposed Beams & Wood Burning Stove**
- **Views of the Harbour**
- **Fantastic Holiday Letting Potential**
- **Situated Just Yards from the Harbourside, Cafés & Restaurants**



Established in the very heart of the picturesque fishing village of Port Isaac just a stone's throw from the slipway is Henry's, a magnificently unique and stylishly converted 18th Century Grade II listed property beautifully restored and refurbished by the current vendors.

Henry's retains many of its original characterful features including beamed ceilings, exposed wood floors and sliding sash windows - decorated and furnished with a huge amount of style and flair.

Offering uniquely styled three bedroom accommodation, Henry's is a perfect home for those seeking a lavish retreat within this significant coastal village or an excellent investment opportunity.

From Fore Street, steps lead up to a stable door that opens into the unconventionally shaped yet inviting kitchen/dining room with sliding sash windows to both the front and rear aspects and a winding staircase rising to first floor level.

The original beamed ceiling and exposed wood floors add character as does the recessed slate fireplace with inset multi-fuel burner. The stylish kitchen is fitted with a range of modern base units with solid slate worktop and matching upstands together with an inset stainless steel sink.

The integral appliances consist of a ceramic hob, electric oven and grill, dishwasher and washing machine. There are separate recessed cupboards with space for the fridge. Stepping up into the living room you will find a seagrass carpet, exposed ceiling beams, a range of deep built in storage cupboards and a picture window with deep sill giving views across the harbour, rugged cliffs and out to sea.

With painted wood panelled walls and a nautical rope handrail, the aforementioned staircase reaches the first floor to find two double bedrooms both with sliding sash windows to the front aspect, one with an exposed feature fireplace.

The bathroom has a white suite which includes a panelled bath, slate tiling, panelled walls and exposed wood floors. A wooden double glazed window to rear aspect offers great views across the harbour to the rugged cliffs and out to sea.

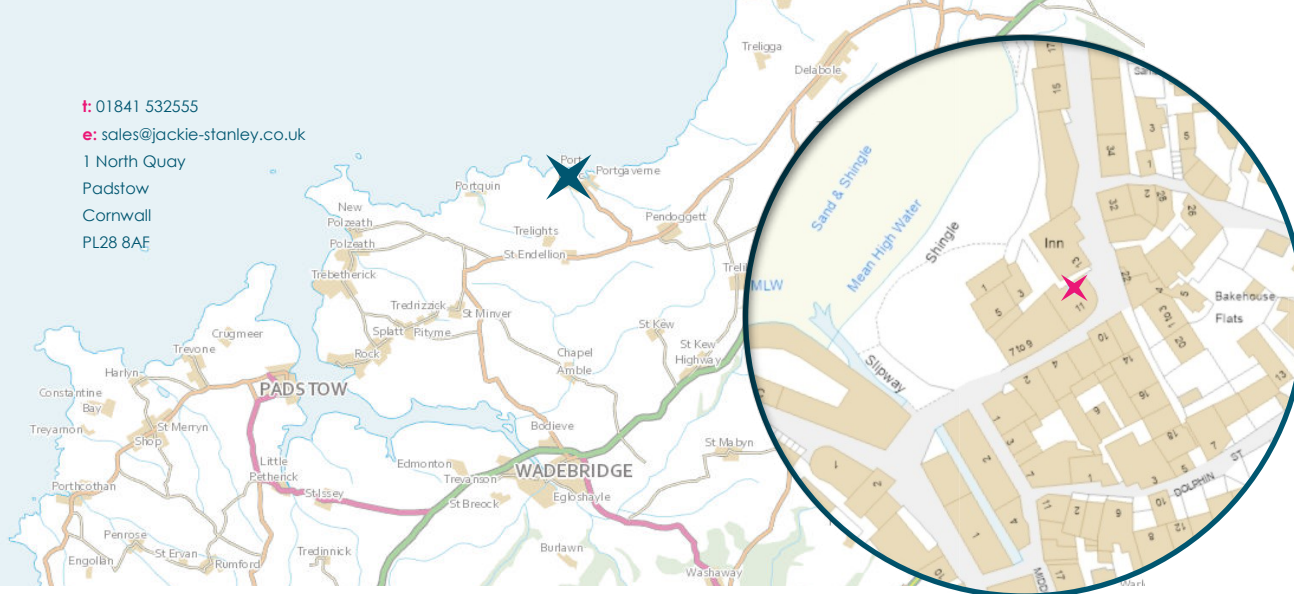
Lastly, further stairs rise to the attic bedroom with exposed beams and Velux window. The cottage also benefits from an external storage area. Services to the property include mains water, electricity and drainage. EPC rating TBC. Council tax band B.

Port Isaac is a quaint, historic picturesque fishing village, well known globally for its association with Doc Martin and the



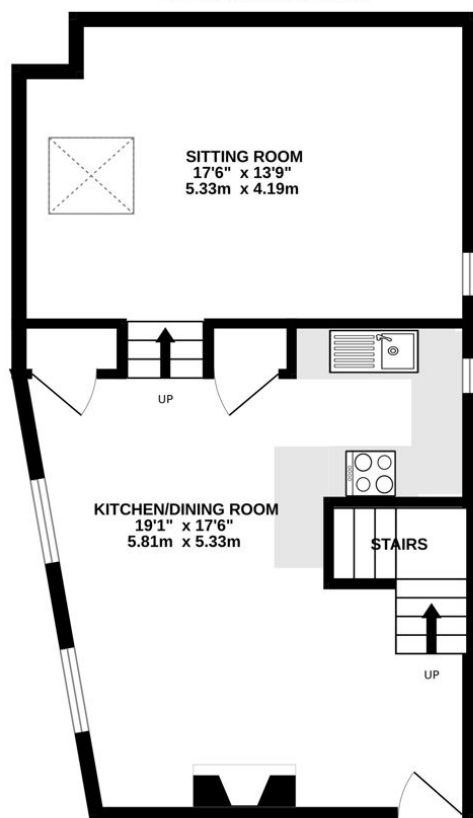
Henry's, 11 Fore Street, Port Isaac
PL29 3RB
£495,000 guide

t: 01841 532555
 e: sales@jackie-stanley.co.uk
 1 North Quay
 Padstow
 Cornwall
 PL28 8AF

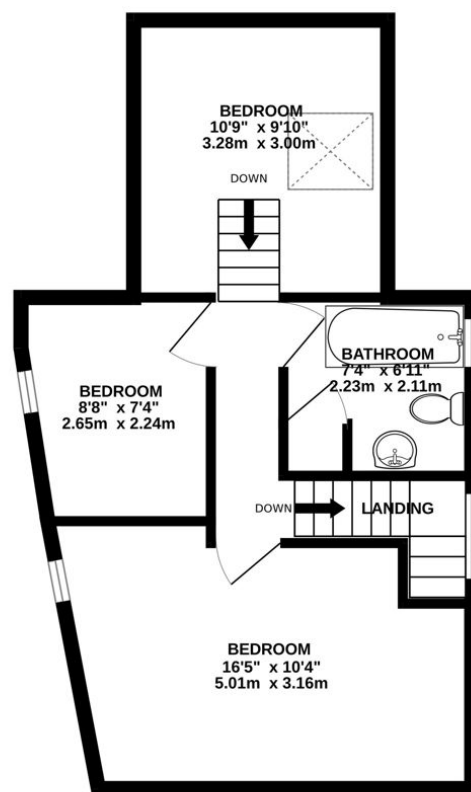


"Henry's is a totally unique and interesting property oozing character"

GROUND FLOOR
 503 sq.ft. (46.7 sq.m.) approx.



1ST FLOOR
 414 sq.ft. (38.5 sq.m.) approx.



TOTAL FLOOR AREA : 917 sq.ft. (85.2 sq.m.) approx.

Fisherman's Friends. This sought after destination offers breathtaking walks across the surrounding dramatic coastline of North Cornwall as well as having its own beach and working Harbour.

There are delightful boutiques and galleries for those who wish to explore the magical narrow streets and to finish off you can always pop into one of the cosy cafés, pubs or Michelin star restaurants of Nathan Outlaw.

The neighbouring village of Port Gaverne was once a thriving 19th Century fishing port and to this day remains unspoilt with the sheltered sandy beach protected by the National Trust. Watersports equipment is available for hire so one can get out and experience water based activities.

To find Henry's, turn off the B3314 coast road onto the B3267 signposted Port Isaac. Upon entering the village, follow New Road and then turn off left onto Back Hill taking you down past the church. At the end of Back Hill, turn left onto Fore Street. Follow Fore Street all the way down towards the harbour.

The entrance to Henry's can be found at the bottom of the hill on the right hand side just above The postcode for satellite navigation is PL29 3RB. What3words: scar.startles.combos