

# The Hideout

MAWGAN PORTH



**Jackie Stanley**  
ESTATE AGENTS





- *Uniquely Conceived Underground Dwelling of Interesting Architectural Design*
- *Superbly Elevated Position Above the Beach at Mawgan Porth*
- *Stunning Views of the Surf below & Ocean Beyond*
- *Four Double Bedrooms with Four Individually Styled En-Suite Bathrooms*
- *Secret Subterranean Cinema & Games Room*
- *Impressive Open Plan Living Space Encased in Glass*
- *Cedar Clad Hot Tub, Wood Burning Stove & Covered Parking Area for Three Vehicles*
- *Currently a Holiday Letting History Generating a Substantial Income*

Encircled by a sea view terrace, grass covered roof garden and natural stone façade, The Hideout blends seamlessly into the landscape of Mawgan Porth.

The Hideout is a unique underground four bedroom dwelling of interesting architectural design, bold, contemporary and most certainly a luxurious coastal home perched above Mawgan Porth's ever-changing tides.

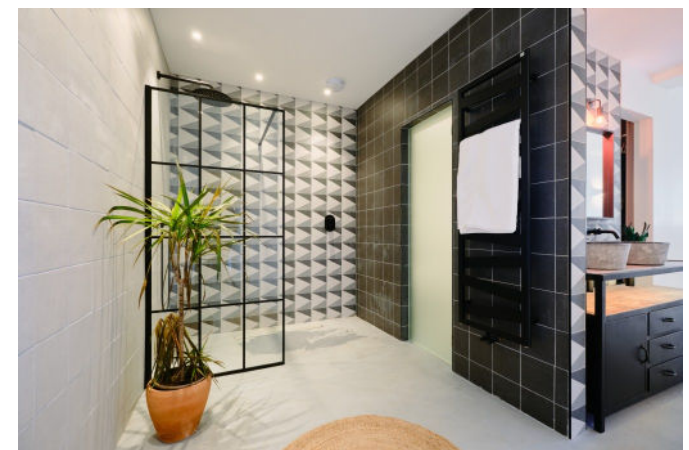
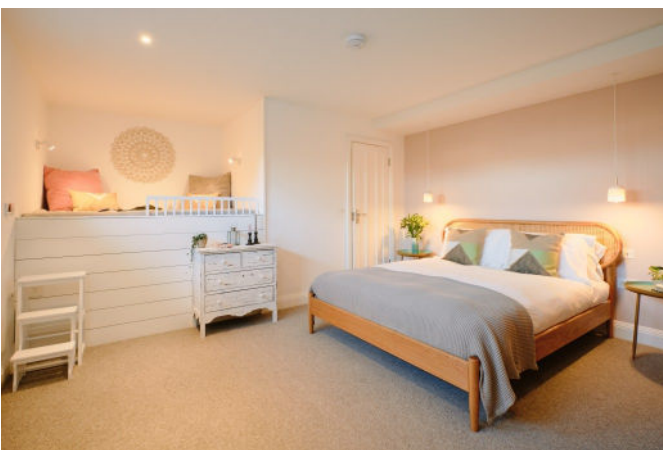
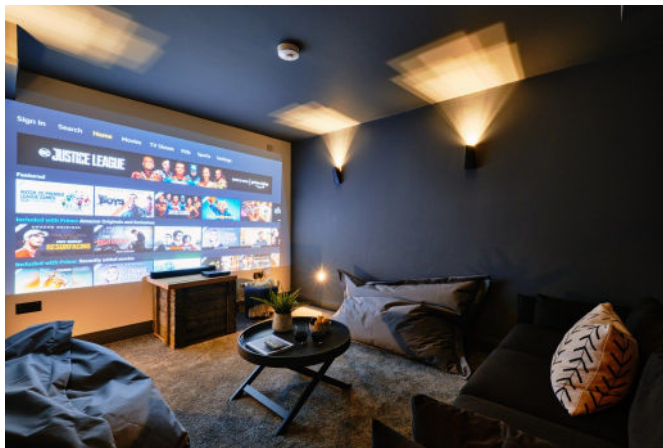
Noteworthy features include a cool and sumptuous subterranean games room and separate cinema room, polished concrete floors, indulgent cedar clad hot tub, striking textures, bold and playful colour schemes, a wood burning stove and modern fixtures and fittings.

The ultimate social space, the lounge is encased in glass providing a bright sunny hub. With an unusually shaped ceiling adding drama, the wood burned creates a focal point. The kitchen is sleek and contemporary with striking wood panelling overhead. There is a separate utility room for convenience.

Tucked away at basement level is The Hideout's secret, an incredibly sleek games room and cinema room. Akin to a metropolitan hangout, the neon lights, exposed bricks, drinks fridge and pool table create an oh-so-cool setting for hours of entertainment.

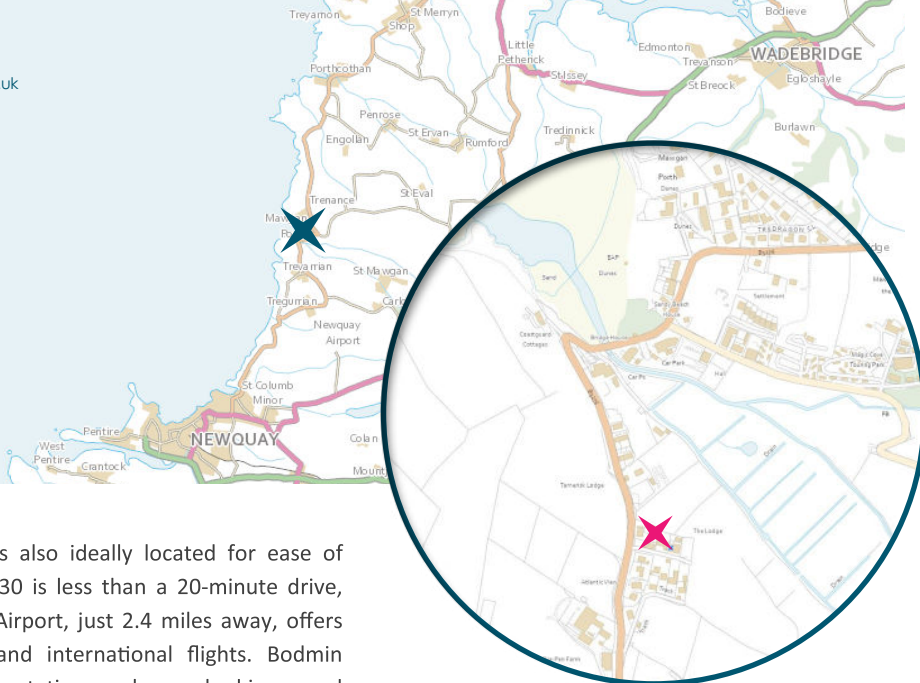
The quirky and playful design continues into the four bedrooms. The master bedroom with ocean views from the bed and hanging chair features polished concrete floors, an industrial-style en-suite and a 'hidden' bath tub. Another perfectly formed double room and family bathroom are just next door with another double bedroom and en-suite found at the top of a small flight of stairs. This bedroom also has a raised sleeping area for one person. Children will delight in the adventurous fourth bedroom, which features a climbing wall and indoor slide as well as another en-suite shower room.

An elevated roof garden looks out across rolling green hills and the crashing waves below. There is plenty of space for families or groups of friends to spread out and savour the view. The lower courtyard area is perfect for al fresco dining alongside the indulgent cedar clad hot tub and handy outdoor shower for sandy returns.



**The Hideout, Mawgan Porth, TR8 4AL**  
£1,950,000 guide

t: 01841 532555  
e: sales@jackie-stanley.co.uk  
1 North Quay  
Padstow  
Cornwall  
PL28 8AF



Mawgan Porth is also ideally located for ease of transport. The A30 is less than a 20-minute drive, while Newquay Airport, just 2.4 miles away, offers both domestic and international flights. Bodmin Parkway main line station can be reached in around 30 minutes, with regular services to London Paddington.

To find The Hideout, leave Newquay Airport and turn left heading west towards Newquay. Follow this road to the T junction at the end of the road and turn right onto the B3276, continuing through Trevarrian. As you head down the hill into Mawgan Porth, The Hideout can be found along on the right hand side next door to The Lookout. The postcode for satellite navigation is TR8 4AL. What3words: along.dabbling.growl

*“The Hideout is a unique underground four bedroom dwelling of interesting architectural design, bold, contemporary and most certainly a luxurious coastal home perched above Mawgan Porth’s ever-changing tides”*

The undercover parking bays provide enough space to park three vehicles. Services to the property include mains gas, water, electricity and drainage. EPC rating B. Council Tax Band deleted. Ofcom suggest superfast broadband availability. Ofcom suggest 4G mobile coverage.

Mawgan Porth has become one of the most sought-after destinations in North Cornwall, renowned for its magnificent sandy beach and dramatic coastal scenery. The bay is a haven for surfers and bathers, with water sports available throughout the year and stunning cliff-top walks along the South West Coast Path. From here, walkers can enjoy spectacular routes to Watergate Bay and the iconic Bedruthan Steps, both within easy reach.

The village itself offers a welcoming mix of amenities, including a local store, cafés, independent eateries, surf school, gift shops and the popular Merrymoor public house. For fine dining, the award-winning Scarlet Hotel and nearby Bedruthan Hotel provide exceptional restaurants, together with first-class spa and leisure facilities. A short drive away, Padstow is home to some of Cornwall’s most celebrated culinary destinations, including Rick Stein’s famous Seafood Restaurant, Paul Ainsworth’s Michelin-starred No.6 and the acclaimed Prawn On The Lawn.

